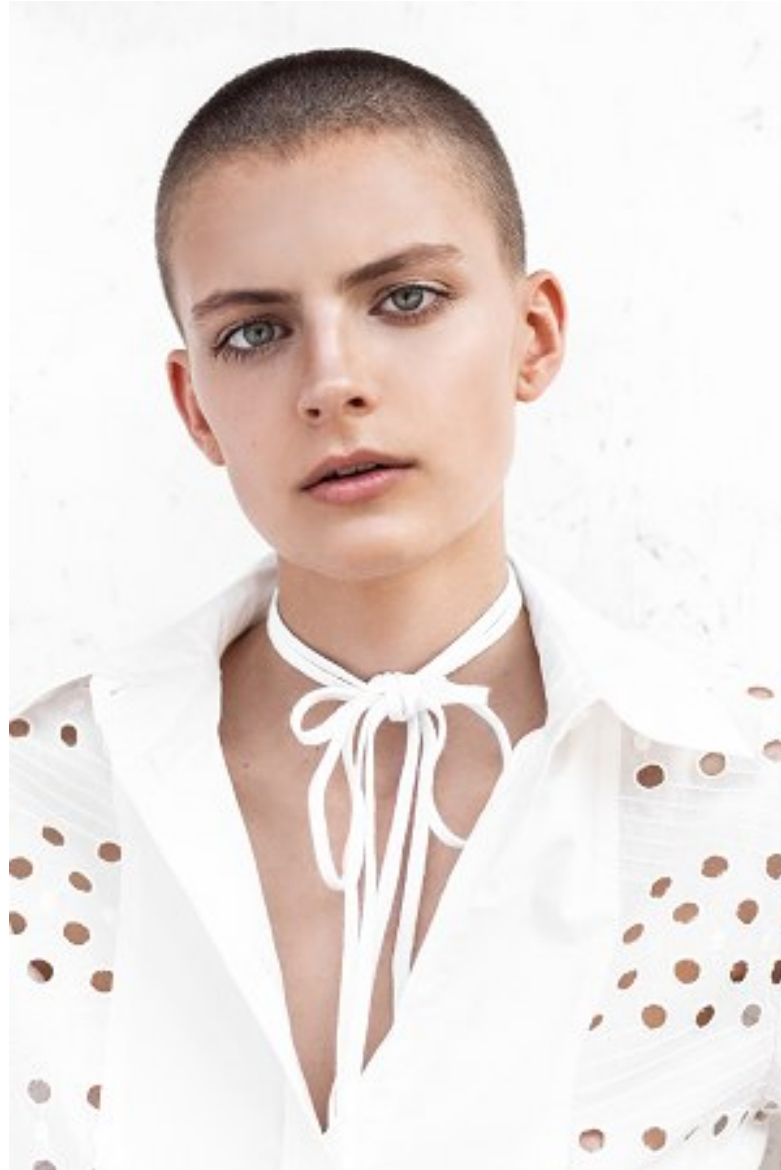


KARIN

MODELS AGENCY



ZOFIA WROBEL

HEIGHT 177CM/5'9.5" | BUST 83CM/32.5" | WAIST 61CM/24" | HIPS 87CM/34.5" | SHOES 39 EU/8 US/6 UK | HAIR DARK BLONDE | EYES BLUE

KARIN

MODELS AGENCY



ZOFIA WROBEL

HEIGHT 177CM/5'9.5" | BUST 83CM/32.5" | WAIST 61CM/24" | HIPS 87CM/34.5" | SHOES 39 EU/8 US/6 UK | HAIR DARK BLONDE | EYES BLUE

KARIN

MODELS AGENCY



ZOFIA WROBEL

HEIGHT 177CM/5'9.5" | BUST 83CM/32.5" | WAIST 61CM/24" | HIPS 87CM/34.5" | SHOES 39 EU/8 US/6 UK | HAIR DARK BLONDE | EYES BLUE

KARIN

MODELS AGENCY



ZOFIA WROBEL

HEIGHT 177CM/5'9.5" | BUST 83CM/32.5" | WAIST 61CM/24" | HIPS 87CM/34.5" | SHOES 39 EU/8 US/6 UK | HAIR DARK BLONDE | EYES BLUE

KARIN

MODELS AGENCY



ZOFIA WROBEL

HEIGHT 177CM/5'9.5" | BUST 83CM/32.5" | WAIST 61CM/24" | HIPS 87CM/34.5" | SHOES 39 EU/8 US/6 UK | HAIR DARK BLONDE | EYES BLUE

KARIN

MODELS AGENCY



ZOFIA WROBEL

HEIGHT 177CM/5'9.5" | BUST 83CM/32.5" | WAIST 61CM/24" | HIPS 87CM/34.5" | SHOES 39 EU/8 US/6 UK | HAIR DARK BLONDE | EYES BLUE

KARIN

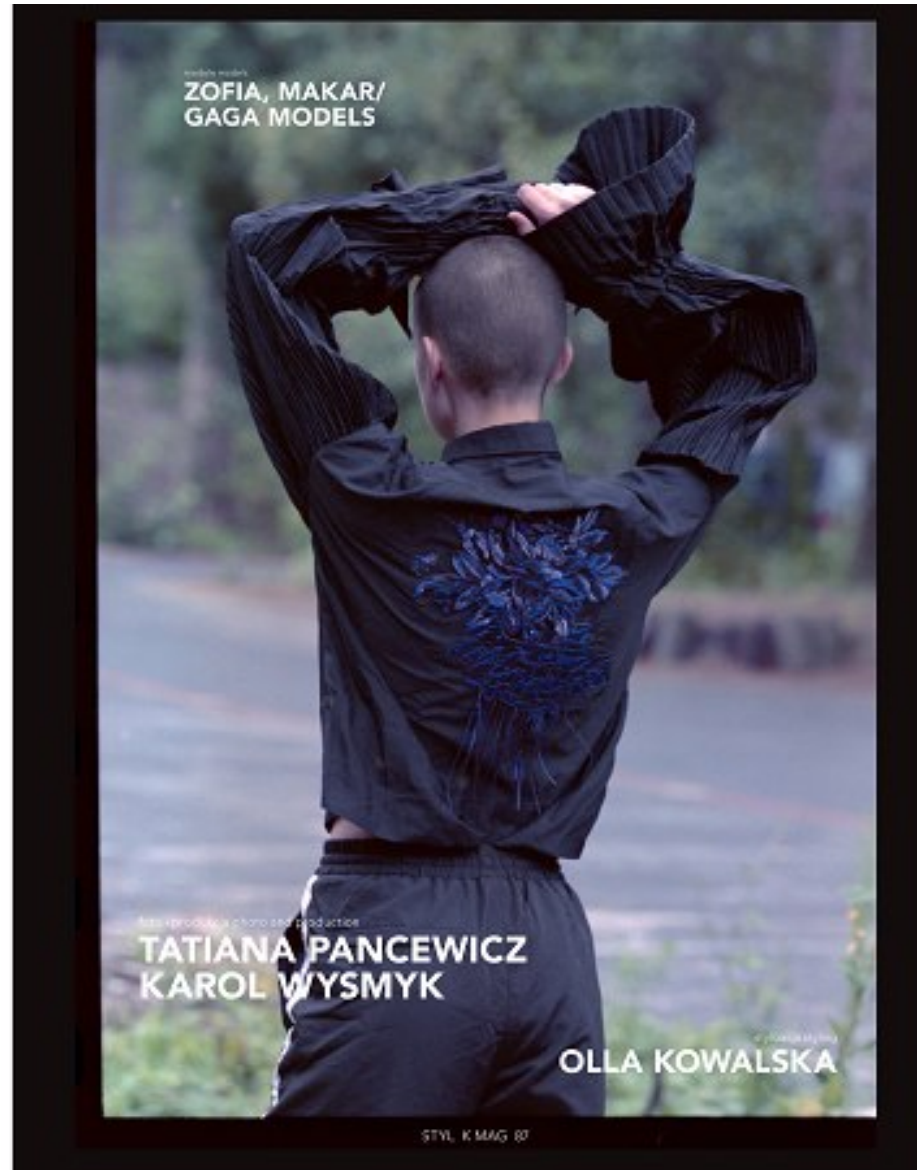
MODELS AGENCY

1991



Kosobudziński MMVC, spotkanie z twórczynią WOKOŁA, fotografika: OLLA KOWALSKA

86 K MAG STYL



STYL K MAG 87

ZOFIA WROBEL

HEIGHT 177CM/5'9.5" | BUST 83CM/32.5" | WAIST 61CM/24" | HIPS 87CM/34.5" | SHOES 39 EU/8 US/6 UK | HAIR DARK BLONDE | EYES BLUE

KARIN

MODELS AGENCY



ZOFIA WROBEL

HEIGHT 177CM/5'9.5" | BUST 83CM/32.5" | WAIST 61CM/24" | HIPS 87CM/34.5" | SHOES 39 EU/8 US/6 UK | HAIR DARK BLONDE | EYES BLUE

KARIN

MODELS AGENCY



ZOFIA WROBEL

HEIGHT 177CM/5'9.5" | BUST 83CM/32.5" | WAIST 61CM/24" | HIPS 87CM/34.5" | SHOES 39 EU/8 US/6 UK | HAIR DARK BLONDE | EYES BLUE

KARIN

MODELS AGENCY



ZOFIA WROBEL - modelka z branży mody, która wzięła udział w projekcie LEVIT'S. Jej styl to połączenie klasycznego i nowoczesnego, a także - jak widać - denim. Zofia Wrobel - modelka z branży mody, która wzięła udział w projekcie LEVIT'S. Jej styl to połączenie klasycznego i nowoczesnego, a także - jak widać - denim.



ZOFIA WROBEL - modelka z branży mody, która wzięła udział w projekcie LEVIT'S. Jej styl to połączenie klasycznego i nowoczesnego, a także - jak widać - denim. Zofia Wrobel - modelka z branży mody, która wzięła udział w projekcie LEVIT'S. Jej styl to połączenie klasycznego i nowoczesnego, a także - jak widać - denim.



ART K MAG 129

ZOFIA WROBEL

HEIGHT 177CM/5'9.5" | BUST 83CM/32.5" | WAIST 61CM/24" | HIPS 87CM/34.5" | SHOES 39 EU/8 US/6 UK | HAIR DARK BLONDE | EYES BLUE

KARIN

MODELS AGENCY



ZOFIA WROBEL

HEIGHT 177CM/5'9.5" | BUST 83CM/32.5" | WAIST 61CM/24" | HIPS 87CM/34.5" | SHOES 39 EU/8 US/6 UK | HAIR DARK BLONDE | EYES BLUE

KARIN

MODELS AGENCY

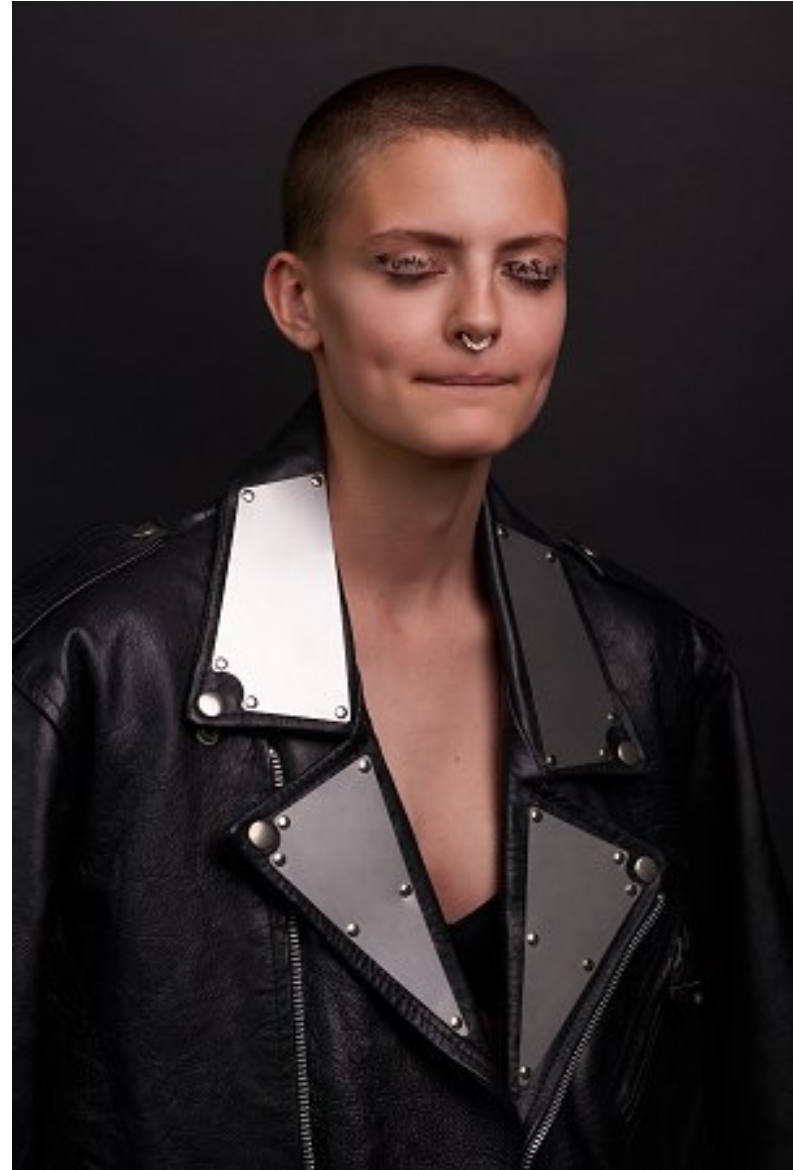


ZOFIA WROBEL

HEIGHT 177CM/5'9.5" | BUST 83CM/32.5" | WAIST 61CM/24" | HIPS 87CM/34.5" | SHOES 39 EU/8 US/6 UK | HAIR DARK BLONDE | EYES BLUE

KARIN

MODELS AGENCY



ZOFIA WROBEL

HEIGHT 177CM/5'9.5" | BUST 83CM/32.5" | WAIST 61CM/24" | HIPS 87CM/34.5" | SHOES 39 EU/8 US/6 UK | HAIR DARK BLONDE | EYES BLUE