
KARIN

MODELS AGENCY

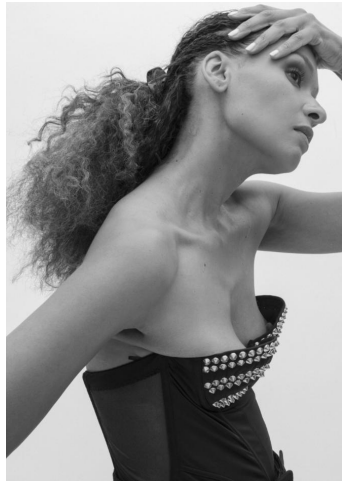


Amelie LATOURNALD

Height : 5'8" / 173 cm | Bust : 34.5" / 87 cm | Waist : 27.5" / 70 cm | Hips : 37" / 94 cm | Shoe : 7.0 US / 5.0 UK | Hair Colour : Dark Brown | Eyes : Brown

KARIN

MODELS AGENCY

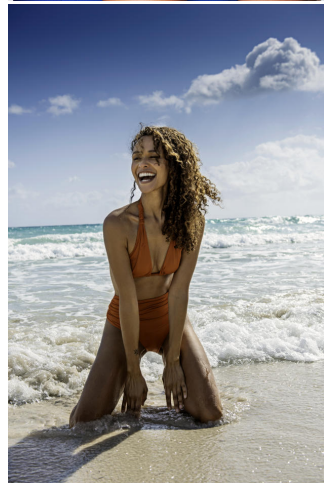


Amelie LATOURNALD

Height : 5'8" / 173 cm | Bust : 34.5" / 87 cm | Waist : 27.5" / 70 cm | Hips : 37" / 94 cm | Shoe : 7.0 US / 5.0 UK | Hair Colour : Dark Brown | Eyes : Brown

KARIN

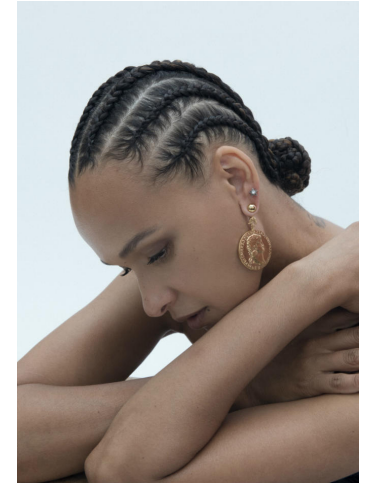
MODELS AGENCY



Amelie LATOURNALD

Height : 5'8" / 173 cm | Bust : 34.5" / 87 cm | Waist : 27.5" / 70 cm | Hips : 37" / 94 cm | Shoe : 7.0 US / 5.0 UK | Hair Colour : Dark Brown | Eyes : Brown

KARIN
MODELS AGENCY



Amelie LATOURNARD

Height : 5'8" / 173 cm | Bust : 34.5" / 87 cm | Waist : 27.5" / 70 cm | Hips : 37" / 94 cm | Shoe : 7.0 US / 5.0 UK | Hair Colour : Dark Brown | Eyes : Brown

KARIN

MODELS AGENCY



Amelie LATOURNARD

Height : 5'8" / 173 cm | Bust : 34.5" / 87 cm | Waist : 27.5" / 70 cm | Hips : 37" / 94 cm | Shoe : 7.0 US / 5.0 UK | Hair Colour : Dark Brown | Eyes : Brown