
KARIN

MODELS AGENCY



Clemence Lognonne

Height : 5'9" / 175 cm | Bust : 32" / 81 cm | Waist : 25.5" / 65 cm | Hips : 35.5" / 90 cm | Shoe : 8.0 US / 6.0 UK | Hair Colour : Brown | Eyes : Blue

KARIN

MODELS AGENCY



Clemence Lognonne

Height : 5'9" / 175 cm | Bust : 32" / 81 cm | Waist : 25.5" / 65 cm | Hips : 35.5" / 90 cm | Shoe : 8.0 US / 6.0 UK | Hair Colour : Brown | Eyes : Blue

KARIN

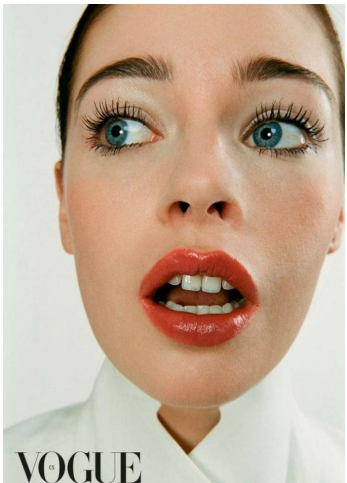
MODELS AGENCY



Clemence Lognonne

Height : 5'9" / 175 cm | Bust : 32" / 81 cm | Waist : 25.5" / 65 cm | Hips : 35.5" / 90 cm | Shoe : 8.0 US / 6.0 UK | Hair Colour : Brown | Eyes : Blue

KARIN
MODELS AGENCY



Clemence Lognonne

Height : 5'9" / 175 cm | Bust : 32" / 81 cm | Waist : 25.5" / 65 cm | Hips : 35.5" / 90 cm | Shoe : 8.0 US / 6.0 UK | Hair Colour : Brown | Eyes : Blue

KARIN

MODELS AGENCY



Clemence Lognonne

Height : 5'9" / 175 cm | Bust : 32" / 81 cm | Waist : 25.5" / 65 cm | Hips : 35.5" / 90 cm | Shoe : 8.0 US / 6.0 UK | Hair Colour : Brown | Eyes : Blue