

---

# KARIN

---

MODELS AGENCY

---



Myrtille REVEMONT / REVEMONT BV •

Height : 57.5" / 171 cm | Bust : 32.5" / 83 cm | Waist : 23" / 59 cm | Hips : 34.5" / 87 cm | Shoe : 6.5 US / 4.5 UK | Hair Colour : Dark Blonde | Eyes : Blue/Green

**KARIN**  
MODELS AGENCY



Myrtille REVEMONT / REVEMONT BV •

Height : 5'7.5" / 171 cm | Bust : 32.5" / 83 cm | Waist : 23" / 59 cm | Hips : 34.5" / 87 cm | Shoe : 6.5 US / 4.5 UK | Hair Colour : Dark Blonde | Eyes : Blue/Green

# KARIN

## MODELS AGENCY



Myrtille REVEMONT / REVEMONT BV •

Height : 5'7.5" / 171 cm | Bust : 32.5" / 83 cm | Waist : 23" / 59 cm | Hips : 34.5" / 87 cm | Shoe : 6.5 US / 4.5 UK | Hair Colour : Dark Blonde | Eyes : Blue/Green

# KARIN

MODELS AGENCY



**AÑOS 80**  
Cazadora de napa  
con mangas a  
cuadros 'black &  
white' y con  
capelina de visón  
vendé (7.900 €),  
minifalda de len-  
tejuelas (3.500 €)  
y bolso con es-  
tampado 'Mono-  
gram' (1.890 €),  
todo de **Louis  
Vuitton**. Medias  
tupidas (12,25 €),  
de **Calzedonia**.

Maquillaje y pelu-  
quería: Kley Kate  
(Esther Almansa  
Management)  
para **Charlotte  
Tilbury** y **Wella  
Professionals**.  
Modelo: Myrtille  
Revemont (UNO).  
Agradecimien-  
tos al Hotel  
Vincici Capitol.



**MIX PRINT**  
'Blazer' en 'animal  
print' (1.090 €),  
chaqueo de lente-  
juelas (990 €), jer-  
sey de lamé estam-  
pado (490 €), pan-  
talones de terciopelo  
(600 €) y bolso  
de malla plateada  
(550 €), todo  
de **Paco Rabanne**.

Myrtille REVEMONT / REVEMONT BV •

Height : 5'7.5" / 171 cm | Bust : 32.5" / 83 cm | Waist : 23" / 59 cm | Hips : 34.5" / 87 cm | Shoe : 6.5 US / 4.5 UK | Hair Colour : Dark Blonde | Eyes : Blue/Green

# KARIN

MODELS AGENCY



Myrtille REVEMONT / REVEMONT BV •

Height : 5'7.5" / 171 cm | Bust : 32.5" / 83 cm | Waist : 23" / 59 cm | Hips : 34.5" / 87 cm | Shoe : 6.5 US / 4.5 UK | Hair Colour : Dark Blonde | Eyes : Blue/Green

# KARIN

MODELS AGENCY



Myrtille REVEMONT / REVEMONT BV •

Height : 5'7.5" / 171 cm | Bust : 32.5" / 83 cm | Waist : 23" / 59 cm | Hips : 34.5" / 87 cm | Shoe : 6.5 US / 4.5 UK | Hair Colour : Dark Blonde | Eyes : Blue/Green

**KARIN**  
MODELS AGENCY



Myrtille REVEMONT / REVEMONT BV •

Height : 5'7.5" / 171 cm | Bust : 32.5" / 83 cm | Waist : 23" / 59 cm | Hips : 34.5" / 87 cm | Shoe : 6.5 US / 4.5 UK | Hair Colour : Dark Blonde | Eyes : Blue/Green

# KARIN

MODELS AGENCY



EXQUIS  
SEX APPEAL  
A GAUCHE  
ELENA, VESTE  
EN COTON ET LIN,  
COMPTOIR DES  
COTONNIERS, MAILLOT  
DE BAIN EN POLYAMIDE  
JACQUEMUS, SANDALE  
GIANNI VITO ROSSI,  
MYRTILLE, PAILL  
ERIC BOMPARD, SHORT  
EN VISCOSE, ATELIER D  
POUR DENNY PARIS,  
CEINTURE COS,  
SANDALE GACATOS.

PARFAITE  
SIMPLICITÉ  
A DROITE  
CHERIE EN COTON,  
GEORGES RECH,  
CUIRTE DE BAIN,  
CALZEDONIA,  
FOULARD PAUL & JOE.

Myrtille REVEMONT / REVEMONT BV •

Height : 5'7.5" / 171 cm | Bust : 32.5" / 83 cm | Waist : 23" / 59 cm | Hips : 34.5" / 87 cm | Shoe : 6.5 US / 4.5 UK | Hair Colour : Dark Blonde | Eyes : Blue/Green

---

# KARIN

---

MODELS AGENCY

---



Myrtille REVEMONT / REVEMONT BV •

Height : 5'7.5" / 171 cm | Bust : 32.5" / 83 cm | Waist : 23" / 59 cm | Hips : 34.5" / 87 cm | Shoe : 6.5 US / 4.5 UK | Hair Colour : Dark Blonde | Eyes : Blue/Green

# KARIN

MODELS AGENCY



Myrtille REVEMONT / REVEMONT BV •

Height : 5'7.5" / 171 cm | Bust : 32.5" / 83 cm | Waist : 23" / 59 cm | Hips : 34.5" / 87 cm | Shoe : 6.5 US / 4.5 UK | Hair Colour : Dark Blonde | Eyes : Blue/Green

# KARIN

MODELS AGENCY



Myrtille REVEMONT / REVEMONT BV •

Height : 5'7.5" / 171 cm | Bust : 32.5" / 83 cm | Waist : 23" / 59 cm | Hips : 34.5" / 87 cm | Shoe : 6.5 US / 4.5 UK | Hair Colour : Dark Blonde | Eyes : Blue/Green

# KARIN

MODELS AGENCY



Myrtille REVEMONT / REVEMONT BV •

Height : 5'7.5" / 171 cm | Bust : 32.5" / 83 cm | Waist : 23" / 59 cm | Hips : 34.5" / 87 cm | Shoe : 6.5 US / 4.5 UK | Hair Colour : Dark Blonde | Eyes : Blue/Green

# KARIN

MODELS AGENCY



ELLE 147



Myrtille REVEMONT / REVEMONT BV •

Height : 5'7.5" / 171 cm | Bust : 32.5" / 83 cm | Waist : 23" / 59 cm | Hips : 34.5" / 87 cm | Shoe : 6.5 US / 4.5 UK | Hair Colour : Dark Blonde | Eyes : Blue/Green

**KARIN**  
MODELS AGENCY



Myrtille REVEMONT / REVEMONT BV •

Height : 57.5" / 171 cm | Bust : 32.5" / 83 cm | Waist : 23" / 59 cm | Hips : 34.5" / 87 cm | Shoe : 6.5 US / 4.5 UK | Hair Colour : Dark Blonde | Eyes : Blue/Green

---

# KARIN

---

MODELS AGENCY

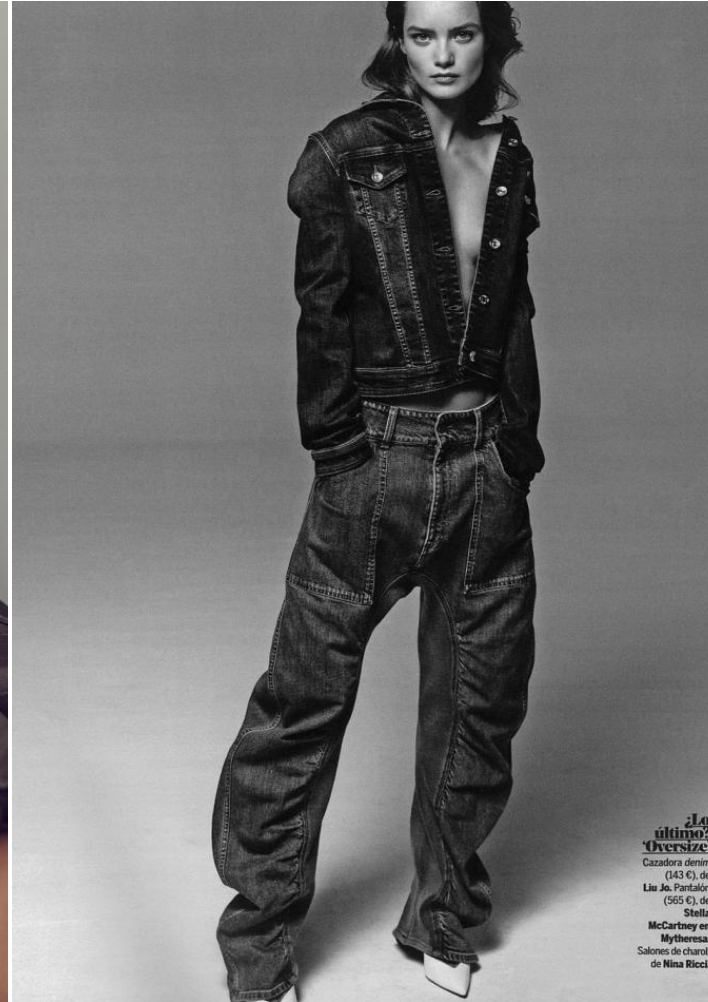
---



Myrtille REVEMONT / REVEMONT BV •

Height : 5'7.5" / 171 cm | Bust : 32.5" / 83 cm | Waist : 23" / 59 cm | Hips : 34.5" / 87 cm | Shoe : 6.5 US / 4.5 UK | Hair Colour : Dark Blonde | Eyes : Blue/Green

**KARIN**  
MODELS AGENCY



**Lo último,  
Oversize**  
Cazadora denim  
(143 €), de  
Liu Jo. Pantalón  
(565 €), de  
Stella  
McCartney en  
Mythosera.  
Salones de charol,  
de Nina Ricci.

Myrtille REVEMONT / REVEMONT BV •

Height : 5'7.5" / 171 cm | Bust : 32.5" / 83 cm | Waist : 23" / 59 cm | Hips : 34.5" / 87 cm | Shoe : 6.5 US / 4.5 UK | Hair Colour : Dark Blonde | Eyes : Blue/Green

---

# KARIN

---

MODELS AGENCY

---



Myrtille REVEMONT / REVEMONT BV •

Height : 57.5" / 171 cm | Bust : 32.5" / 83 cm | Waist : 23" / 59 cm | Hips : 34.5" / 87 cm | Shoe : 6.5 US / 4.5 UK | Hair Colour : Dark Blonde | Eyes : Blue/Green