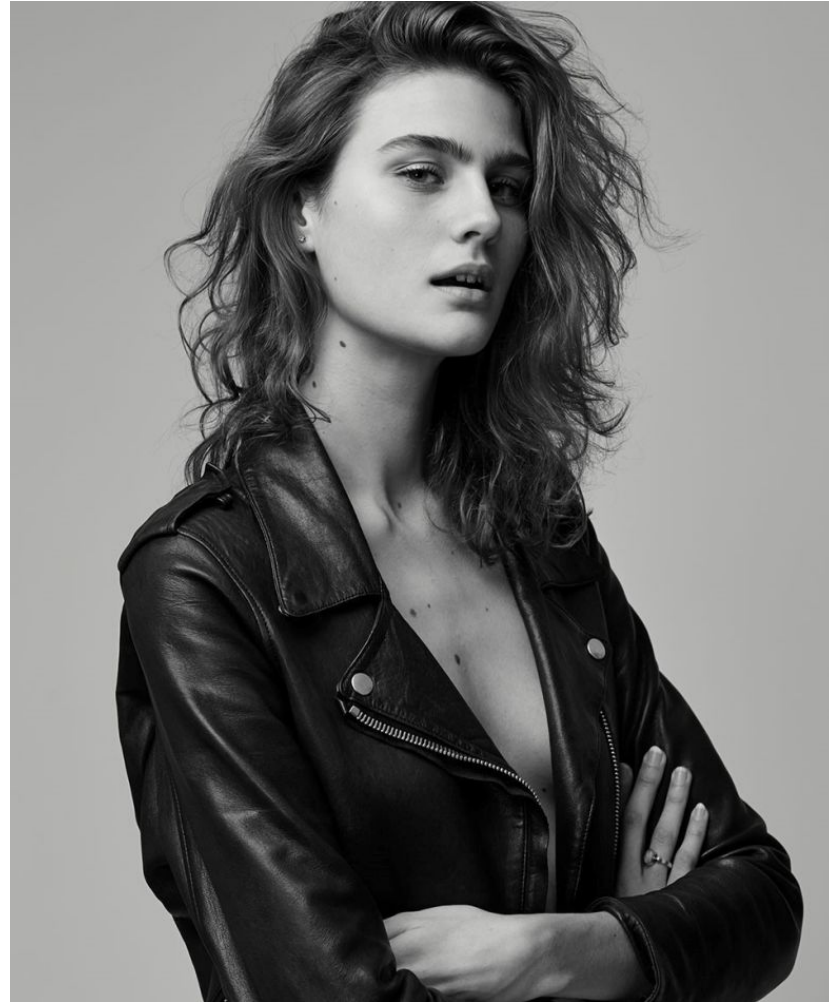

KARIN

MODELS AGENCY



SILKE HAJUNGA •

Height : 5'11.5" / 181 cm | Bust : 32.5" / 83 cm | Waist : 24.5" / 62 cm | Hips : 36" / 92 cm | Shoe : 10.0 US / 7.0 UK | Hair Colour : Brown | Eyes : Blue

KARIN

MODELS AGENCY



SILKE HAJUNGA •

Height : 5'11.5" / 181 cm | Bust : 32.5" / 83 cm | Waist : 24.5" / 62 cm | Hips : 36" / 92 cm | Shoe : 10.0 US / 7.0 UK | Hair Colour : Brown | Eyes : Blue

KARIN

MODELS AGENCY



Selubuk akan emak,
kian menegaskan kesan
elegan pada coat dress
bergaya masculine.



Konsep/tema busana,
Barbary
Fotografi oleh
Andres de Lara
Fashion editor,
Chelsea Resca
Make Up
Julie Cooper using Keryn Aucott
Hair
Liam Moore @ S Management using Keri's
Model
Silke Hajunga @ The Hive Management
Promotional Assistant
Nikola Louka

SILKE HAJUNGA •

Height : 5'11.5" / 181 cm | Bust : 32.5" / 83 cm | Waist : 24.5" / 62 cm | Hips : 36" / 92 cm | Shoe : 10.0 US / 7.0 UK | Hair Colour : Brown | Eyes : Blue

KARIN

MODELS AGENCY



SILKE HAJUNGA •

Height : 5'11.5" / 181 cm | Bust : 32.5" / 83 cm | Waist : 24.5" / 62 cm | Hips : 36" / 92 cm | Shoe : 10.0 US / 7.0 UK | Hair Colour : Brown | Eyes : Blue

KARIN
MODELS AGENCY



SILKE HAJUNGA •

Height : 5'11.5" / 181 cm | Bust : 32.5" / 83 cm | Waist : 24.5" / 62 cm | Hips : 36" / 92 cm | Shoe : 10.0 US / 7.0 UK | Hair Colour : Brown | Eyes : Blue

KARIN

MODELS AGENCY



SILKE HAJUNGA •

Height : 5'11.5" / 181 cm | Bust : 32.5" / 83 cm | Waist : 24.5" / 62 cm | Hips : 36" / 92 cm | Shoe : 10.0 US / 7.0 UK | Hair Colour : Brown | Eyes : Blue

KARIN

MODELS AGENCY



SILKE HAJUNGA •

Height : 5'11.5" / 181 cm | Bust : 32.5" / 83 cm | Waist : 24.5" / 62 cm | Hips : 36" / 92 cm | Shoe : 10.0 US / 7.0 UK | Hair Colour : Brown | Eyes : Blue

KARIN
MODELS AGENCY



SILKE HAJUNGA •

Height : 5'11.5" / 181 cm | Bust : 32.5" / 83 cm | Waist : 24.5" / 62 cm | Hips : 36" / 92 cm | Shoe : 10.0 US / 7.0 UK | Hair Colour : Brown | Eyes : Blue

KARIN

MODELS AGENCY



SILKE HAJUNGA •

Height : 5'11.5" / 181 cm | Bust : 32.5" / 83 cm | Waist : 24.5" / 62 cm | Hips : 36" / 92 cm | Shoe : 10.0 US / 7.0 UK | Hair Colour : Brown | Eyes : Blue

KARIN

MODELS AGENCY



SILKE HAJUNGA •

Height : 5'11.5" / 181 cm | Bust : 32.5" / 83 cm | Waist : 24.5" / 62 cm | Hips : 36" / 92 cm | Shoe : 10.0 US / 7.0 UK | Hair Colour : Brown | Eyes : Blue

KARIN
MODELS AGENCY



SILKE HAJUNGA •

Height : 5'11.5" / 181 cm | Bust : 32.5" / 83 cm | Waist : 24.5" / 62 cm | Hips : 36" / 92 cm | Shoe : 10.0 US / 7.0 UK | Hair Colour : Brown | Eyes : Blue

KARIN

MODELS AGENCY



SILKE HAJUNGA •

Height : 5'11.5" / 181 cm | Bust : 32.5" / 83 cm | Waist : 24.5" / 62 cm | Hips : 36" / 92 cm | Shoe : 10.0 US / 7.0 UK | Hair Colour : Brown | Eyes : Blue

KARIN
MODELS AGENCY



SILKE HAJUNGA •

Height : 5'11.5" / 181 cm | Bust : 32.5" / 83 cm | Waist : 24.5" / 62 cm | Hips : 36" / 92 cm | Shoe : 10.0 US / 7.0 UK | Hair Colour : Brown | Eyes : Blue

KARIN

MODELS AGENCY



SILKE HAJUNGA •

Height : 5'11.5" / 181 cm | Bust : 32.5" / 83 cm | Waist : 24.5" / 62 cm | Hips : 36" / 92 cm | Shoe : 10.0 US / 7.0 UK | Hair Colour : Brown | Eyes : Blue

KARIN

MODELS AGENCY



SILKE HAJUNGA •

Height : 5'11.5" / 181 cm | Bust : 32.5" / 83 cm | Waist : 24.5" / 62 cm | Hips : 36" / 92 cm | Shoe : 10.0 US / 7.0 UK | Hair Colour : Brown | Eyes : Blue

KARIN

MODELS AGENCY



SILKE HAJUNGA •

Height : 5'11.5" / 181 cm | Bust : 32.5" / 83 cm | Waist : 24.5" / 62 cm | Hips : 36" / 92 cm | Shoe : 10.0 US / 7.0 UK | Hair Colour : Brown | Eyes : Blue

KARIN

MODELS AGENCY



SILKE HAJUNGA •

Height : 5'11.5" / 181 cm | Bust : 32.5" / 83 cm | Waist : 24.5" / 62 cm | Hips : 36" / 92 cm | Shoe : 10.0 US / 7.0 UK | Hair Colour : Brown | Eyes : Blue

KARIN

MODELS AGENCY



Bikini Top „Chacha“
mit Hakenfestsitz,
ca. 130 €
Strickhöschen „Chacha“ aus
Polyestermix mit
Elasthananteile,
ca. 120 €
Beides
von KILNIS gea. b.
Stylocos.com, Creditin
mit Knospendetail von
LEAF, ca. 49 €
Stiefelring mit
Schwäbe aus Metall
von LHN JEWELRY,
ca. 21 €
Asymmetrischer
gestraßener
Ring von ALIBI NYC,
ca. 58 €

SILKE HAJUNGA •

Height : 5'11.5" / 181 cm | Bust : 32.5" / 83 cm | Waist : 24.5" / 62 cm | Hips : 36" / 92 cm | Shoe : 10.0 US / 7.0 UK | Hair Colour : Brown | Eyes : Blue

KARIN

MODELS AGENCY



SILKE HAJUNGA •

Height : 5'11.5" / 181 cm | Bust : 32.5" / 83 cm | Waist : 24.5" / 62 cm | Hips : 36" / 92 cm | Shoe : 10.0 US / 7.0 UK | Hair Colour : Brown | Eyes : Blue

KARIN

MODELS AGENCY



Nudefarbener
„Positano“-Bade-
anzug mit navy-
blauem Muster-Print
aus Polyamid von
TOTEME, ca. 125 €.
Feine vergoldete
Creolen von LEAF,
ca. 30 €



SILKE HAJUNGA •

Height : 5'11.5" / 181 cm | Bust : 32.5" / 83 cm | Waist : 24.5" / 62 cm | Hips : 36" / 92 cm | Shoe : 10.0 US / 7.0 UK | Hair Colour : Brown | Eyes : Blue

KARIN

MODELS AGENCY



SILKE HAJUNGA •

Height : 5'11.5" / 181 cm | Bust : 32.5" / 83 cm | Waist : 24.5" / 62 cm | Hips : 36" / 92 cm | Shoe : 10.0 US / 7.0 UK | Hair Colour : Brown | Eyes : Blue

KARIN

MODELS AGENCY



SILKE HAJUNGA •

Height : 5'11.5" / 181 cm | Bust : 32.5" / 83 cm | Waist : 24.5" / 62 cm | Hips : 36" / 92 cm | Shoe : 10.0 US / 7.0 UK | Hair Colour : Brown | Eyes : Blue