
KARIN

MODELS AGENCY

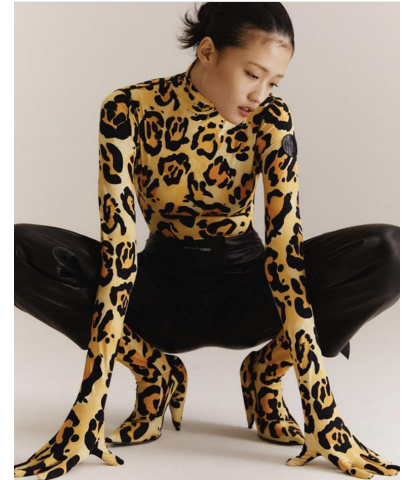


Taehee Kim

Height : 5'9.5" / 177 cm | Bust : 30.5" / 78 cm | Waist : 23" / 59 cm | Hips : 34" / 86 cm | Shoe : 6.5 US / 4.5 UK | Hair Colour : Black | Eyes : Black

KARIN

MODELS AGENCY

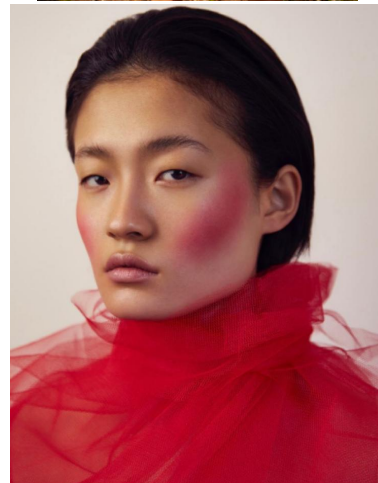
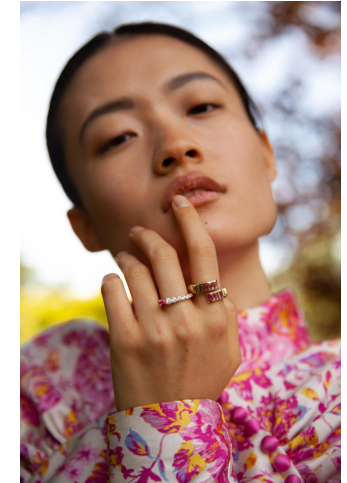
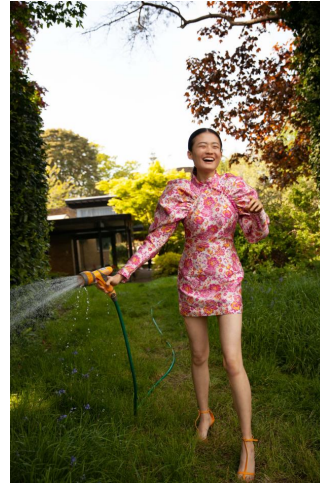


Taehee Kim

Height : 5'9.5" / 177 cm | Bust : 30.5" / 78 cm | Waist : 23" / 59 cm | Hips : 34" / 86 cm | Shoe : 6.5 US / 4.5 UK | Hair Colour : Black | Eyes : Black

KARIN

MODELS AGENCY



© 2022
JAN SAUNDERS DESIGN
JAN PAUL GORETTI
BROUKE and SYLVESTER'S WORK

BALENCIAGA



"Come out and play"
BILLY ELLISH

KEY TREND: EMBELLISHMENT
Photographer: EMMA DALZIEL KILIAN
Fashion Director: ARIE FELDPAU

There was a time in the fall of 2019 when I was
at the height of my career. I was a model of
the year. I was the most beautiful girl in the world.
I was the most beautiful girl in the world.
I was the most beautiful girl in the world.

Taehee Kim

Height : 5'9.5" / 177 cm | Bust : 30.5" / 78 cm | Waist : 23" / 59 cm | Hips : 34" / 86 cm | Shoe : 6.5 US / 4.5 UK | Hair Colour : Black | Eyes : Black

KARIN
MODELS AGENCY



Taehee Kim

Height : 5'9.5" / 177 cm | Bust : 30.5" / 78 cm | Waist : 23" / 59 cm | Hips : 34" / 86 cm | Shoe : 6.5 US / 4.5 UK | Hair Colour : Black | Eyes : Black