

---

# KARIN

---

MODELS AGENCY

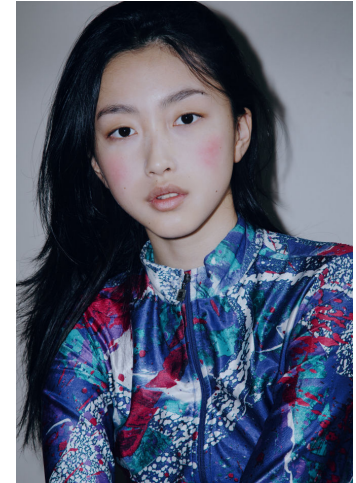
---



CELINE ZHANG

Height : 5'6" / 168 cm | Bust : 31" / 79 cm | Waist : 23.5" / 60 cm | Hips : 31.5" / 80 cm | Shoe : 7.0 US / 5.0 UK | Hair Colour : Black | Eyes : Black

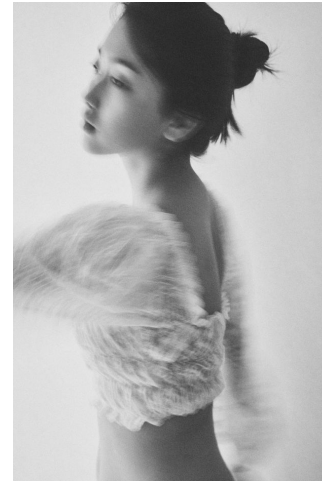
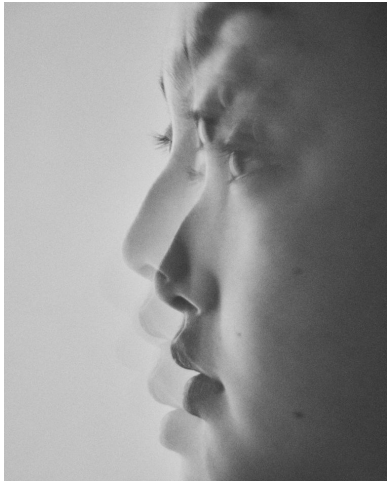
**KARIN**  
MODELS AGENCY



**CELINE ZHANG**

Height : 5'6" / 168 cm | Bust : 31" / 79 cm | Waist : 23.5" / 60 cm | Hips : 31.5" / 80 cm | Shoe : 7.0 US / 5.0 UK | Hair Colour : Black | Eyes : Black

**KARIN**  
MODELS AGENCY



**CELINE ZHANG**

Height : 5'6" / 168 cm | Bust : 31" / 79 cm | Waist : 23.5" / 60 cm | Hips : 31.5" / 80 cm | Shoe : 7.0 US / 5.0 UK | Hair Colour : Black | Eyes : Black

**KARIN**  
MODELS AGENCY



**CELINE ZHANG**

Height : 5'6" / 168 cm | Bust : 31" / 79 cm | Waist : 23.5" / 60 cm | Hips : 31.5" / 80 cm | Shoe : 7.0 US / 5.0 UK | Hair Colour : Black | Eyes : Black