
KARIN

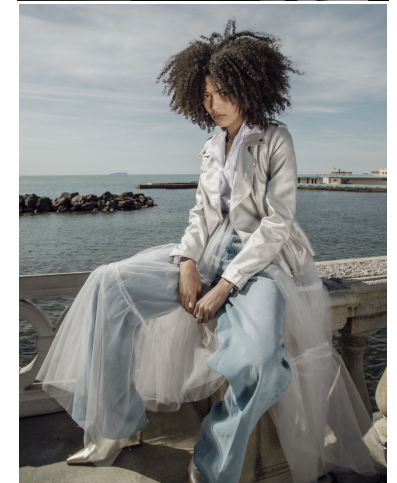
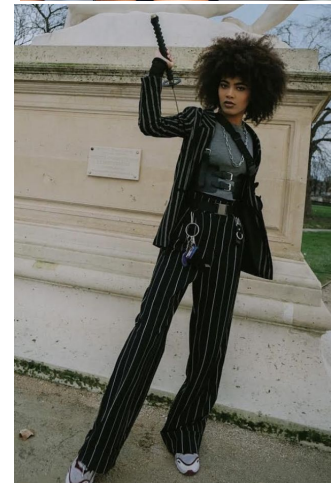
MODELS AGENCY



Line Geurie

Height : 5'9" / 175 cm | Bust : 31.5" / 80 cm | Waist : 23.5" / 60 cm | Hips : 34.5" / 87 cm | Shoe : 8.0 US / 6.0 UK | Hair Colour : Dark Brown | Eyes : Brown

KARIN
MODELS AGENCY

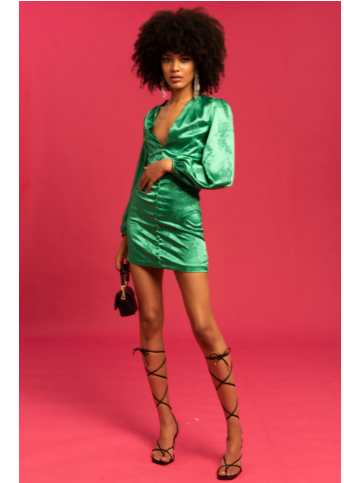
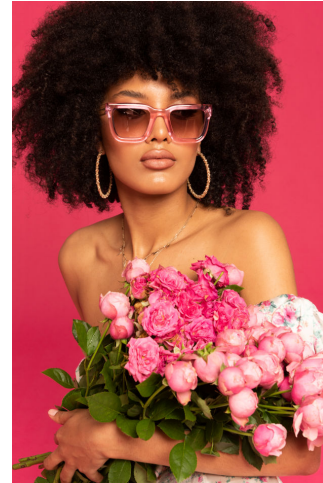


Line Geurie

Height : 5'9" / 175 cm | Bust : 31.5" / 80 cm | Waist : 23.5" / 60 cm | Hips : 34.5" / 87 cm | Shoe : 8.0 US / 6.0 UK | Hair Colour : Dark Brown | Eyes : Brown

KARIN

MODELS AGENCY

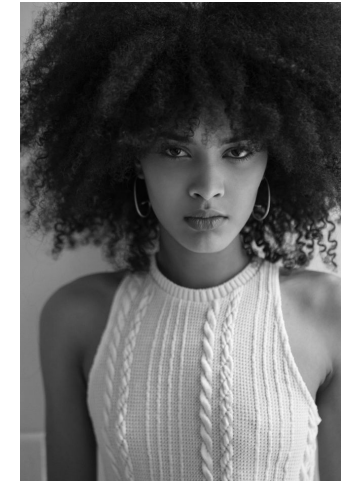
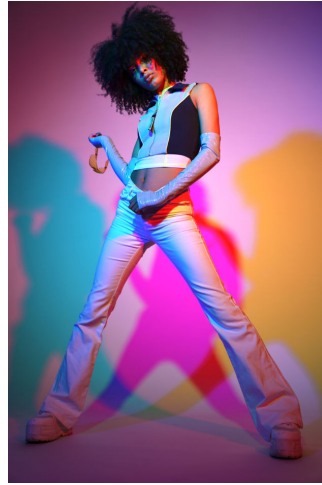


Line Geurie

Height : 5'9" / 175 cm | Bust : 31.5" / 80 cm | Waist : 23.5" / 60 cm | Hips : 34.5" / 87 cm | Shoe : 8.0 US / 6.0 UK | Hair Colour : Dark Brown | Eyes : Brown

KARIN

MODELS AGENCY



Line Geurie

Height : 5'9" / 175 cm | Bust : 31.5" / 80 cm | Waist : 23.5" / 60 cm | Hips : 34.5" / 87 cm | Shoe : 8.0 US / 6.0 UK | Hair Colour : Dark Brown | Eyes : Brown

KARIN

MODELS AGENCY

Line Geurie

Height : 5'9" / 175 cm | Bust : 31.5" / 80 cm | Waist : 23.5" / 60 cm | Hips : 34.5" / 87 cm | Shoe : 8.0 US / 6.0 UK | Hair Colour : Dark Brown | Eyes : Brown