
KARIN

MODELS AGENCY

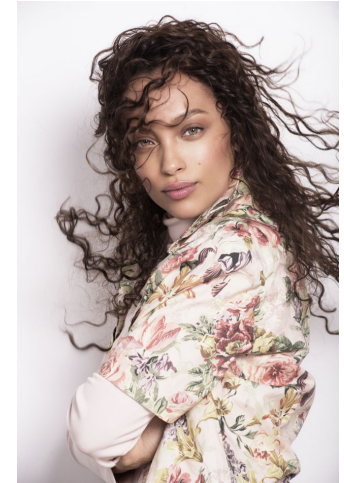


MERIEM SAROLIE

Height : 5'5" / 165 cm | Bust : 34.5" / 88 cm | Waist : 25.5" / 65 cm | Hips : 36" / 92 cm | Shoe : 6.0 US / 4.0 UK |

KARIN

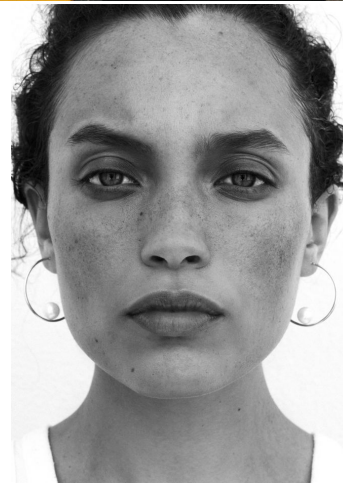
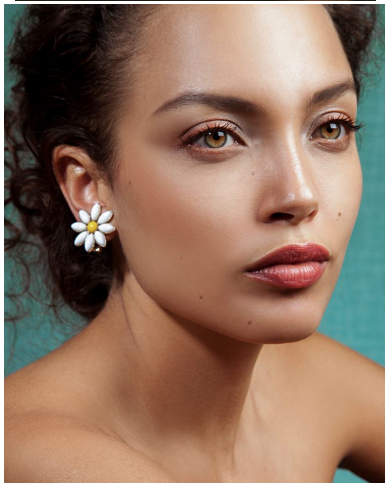
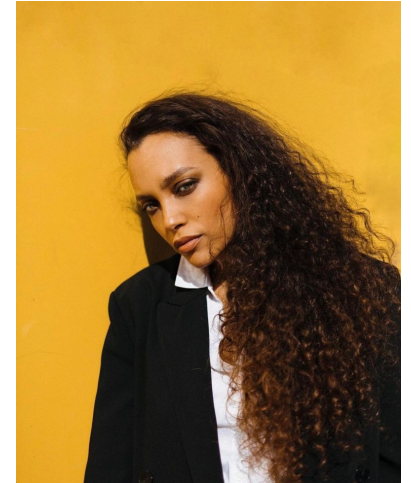
MODELS AGENCY



MERIE M SAROLIE

Height : 5'5" / 165 cm | Bust : 34.5" / 88 cm | Waist : 25.5" / 65 cm | Hips : 36" / 92 cm | Shoe : 6.0 US / 4.0 UK |

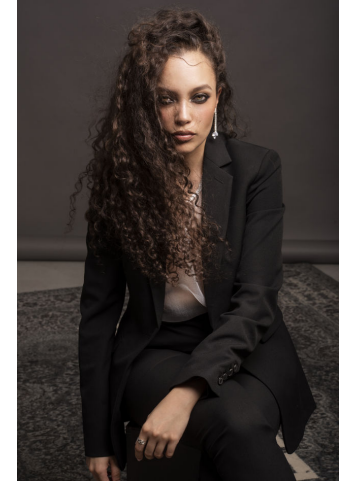
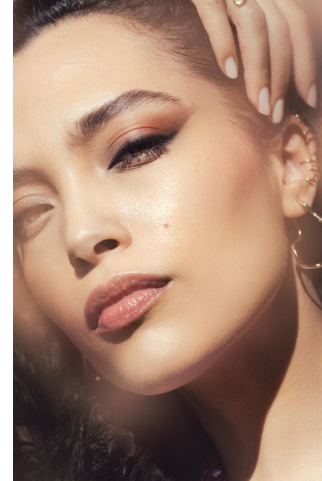
KARIN
MODELS AGENCY



MERIEM SAROLIE

Height : 5'5" / 165 cm | Bust : 34.5" / 88 cm | Waist : 25.5" / 65 cm | Hips : 36" / 92 cm | Shoe : 6.0 US / 4.0 UK |

KARIN
MODELS AGENCY



MERIEM SAROLIE

Height : 5'5" / 165 cm | Bust : 34.5" / 88 cm | Waist : 25.5" / 65 cm | Hips : 36" / 92 cm | Shoe : 6.0 US / 4.0 UK |